

Charon I



Model Charon I 0408

The Charon I is a stove that is suitable for extra long blocks of wood making it possible to heat large rooms. Very suitable for holiday homes, block huts, studios or workshops. A removable cooking-plate is provided. This model is naturally made of solid cast iron and is an asset to your room. The stove is fitted with a fire/ rotating grid and an external air duct at the back which can be regulated with one control.

Technical Information

Efficiency	: 80,2 %	Tested capacity	: 7 kW
Weight	: 103 Kg	Flue gas flow Wood	: 8 m (g/s)
Flue connection	: 120 mm	Pressure	: 10 p (Pa)
Flue gas temperature Wood	: 276 °C	Dust in mg.	: 35 mg/Nm ³
Capacity	: 6-8 kW		

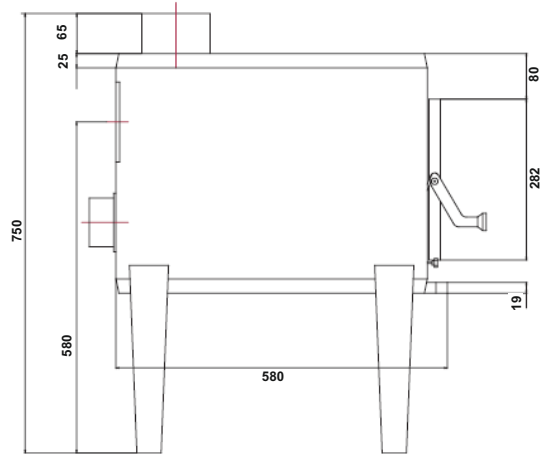
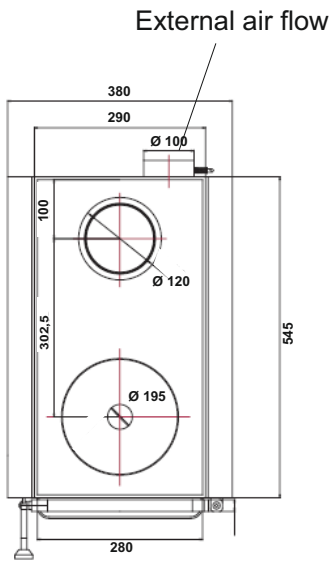
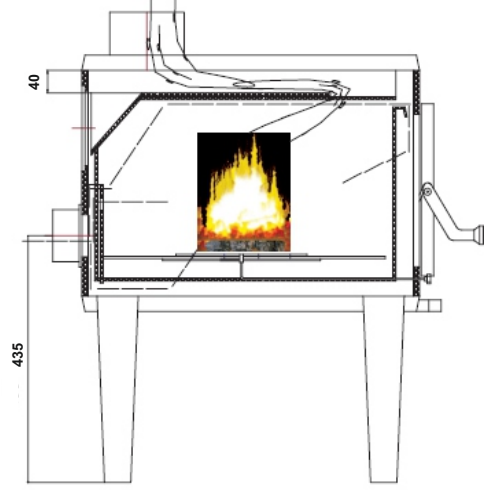
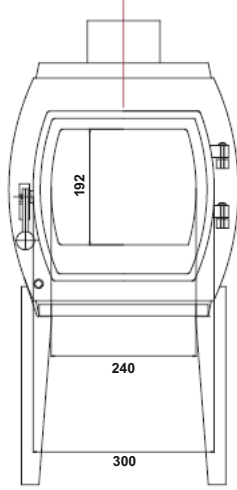
Energy rating:



Tested according to the following standards: gem. Art. 15a B-VG, BStV München, Regensburg, Stuttgart und Aachen, gem. DIN plus, Ö-Norm, CE norm, 1.+2. BimschV. und Luftreinhalte-Verordnung Switzerland.

Charon I

Drawings, measurements and technical information



Extra Details / Technical Information

Measurements in mm HxWxD	Fire place mm HxWxD	Fire opening in mm HxW	Stove window HxW	External air flow	Design	Fleu height pipe	1+2 BimschV	Capacity in cbm	Tested according	
750x380x670	200x280x470	160x260	180x230	yes	1	700	yes	180	13240	
Colour	Inside of fire	Fuel	Continuing/time burning	Fire rotation grip	Ash pan	Fire/rotating grid	Primary air	Secondary air	O-Norm	Clean air act Switzerland
Black	Cast Iron	Wood/coal	Time burning	yes	yes	yes	yes	yes	yes	yes
Dust in Mg on 13% O2: 35 mg/Nm ³		NOX: 114 mg/Nm ³		CO: 875 mg/Nm ³		OGC: 39 mg/Nm ³		Anf. der Städte München, Aachen Stuttgart und Regensburg nach DIN plus		yes
Values converted: 22 mg/MJ		72 mg/MJ		528 mg/MJ		25 mg/MJ				

- Globe fire -

Globefire Ch.Leibfried GmbH, An der Bundesstraße 2,
D-49733 Haren / Ems, Germany

Tested stove Type 1: EN 13240: 2001+A2: 2007

Type	Stove Charon ST 0408/0408D		
Declaration of performance Nr.	003-CPR-2013.06.10		
Test institute Number	1625		
Test-Nr.	RRF - 40061040		
Heat output / Energy efficiency	Fulfilled		
.Efficiency	80,2 %		
.Nominal heat output	7 kW		
.Room efficiency	7 kW		
.Heat output	6 - 8 kW		
Mechanic solidity	Fulfilled		
Surface temperature	Fulfilled		
Combustion products	CO-Emission: 875 mg/Nm ³ - 528 mg/MJ		
.Flue gas temperature	224 °C		
Fire safety	Fulfilled		
.Fire behavior	A1		
.Minimal distance to flammable materials:	Side: 80 cm Rear: 20 cm Bottom: 0 cm Front stove window: 80 cm		
Fuel	Wood	Time burning	
Dust in Mg on 13% O ₂ : 35 mg/Nm ³	Nox: 114mg/Nm ³	CO: 875 mg/Nm ³	OGC:39 mg/Nm ³
Values (converted): 22 mg/MJ	72 mg/MJ	528 mg/MJ	25 mg/MJ
VKF Switzerland	25284		

Reading and follow up of given guidelines in the manuel

The connection of more stoves to one chimney is permitted



Approved German tests and CE mark EN 13240:2001 + A2:2007, according DINplus and also according Art. 15A B-VG Ö-Norm Austria.
1. and 2. level 1. BimschV Germany and also Luftreinhalte-Verordnung Switzerland.